

MONTHLY MEMBERSHIP PROGRESS REPORT

LOCATION NEPAL

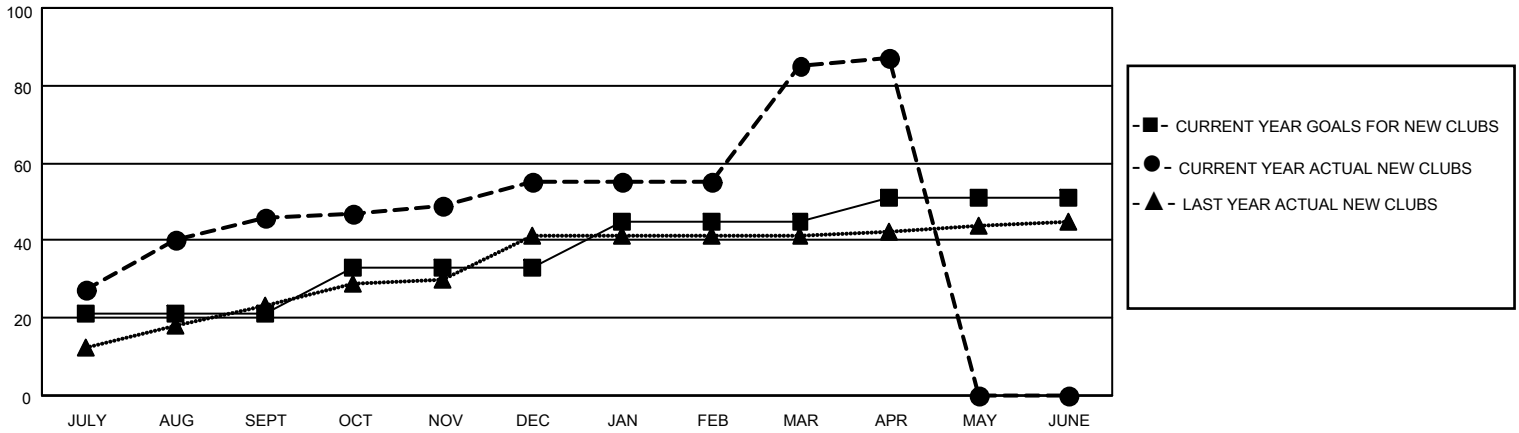
District 325A1

Results as of: 4/30/2022

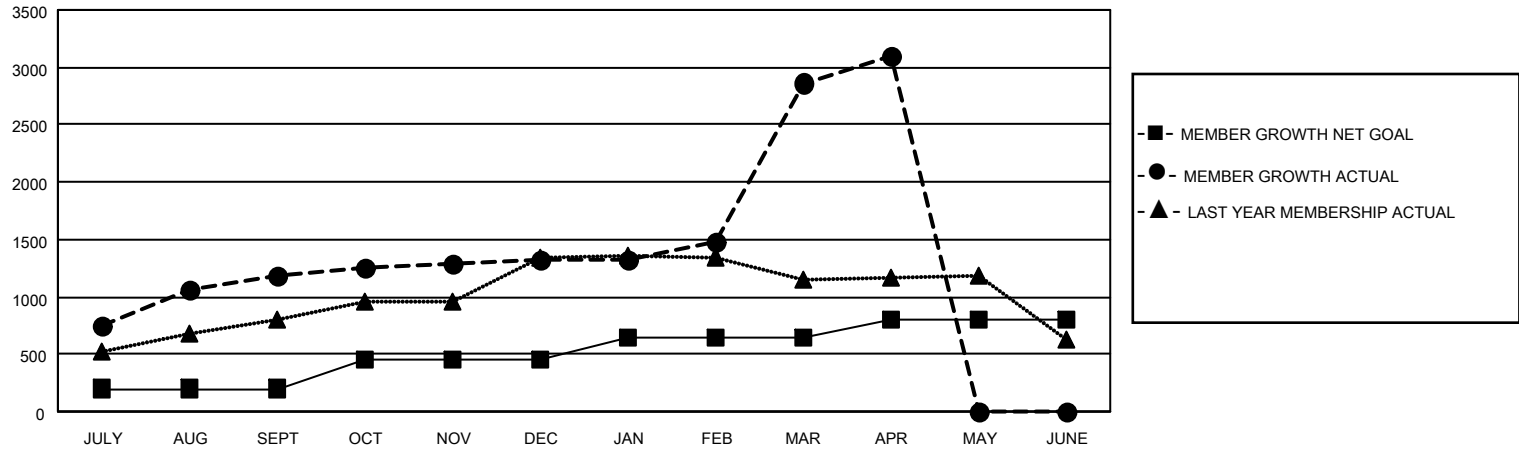
Clubs			
RESULTS FOR 2021-2022			
QUARTER	NEW CLUB GOAL	NEW CLUBS	DROPPED CLUBS
JULY/AUG/SEPT	21	46	4
OCT/NOV/DEC	12	9	1
JAN/FEB/MAR	12	30	0
APR/MAY/JUNE	6	2	0

Members			
RESULTS FOR 2021-2022			
QUARTER	MEMBER GROWTH NET GOAL	MEMBER GROWTH ACTUAL	DROPPED MEMBERS ACTUAL (including transfers)
JULY/AUG/SEPT	200	1394	192
OCT/NOV/DEC	250	339	192
JAN/FEB/MAR	200	1663	115
APR/MAY/JUNE	155	308	57

GOALS AND ACTUAL NEW CLUBS CUMULATIVE



GOALS AND ACTUAL MEMBERS CUMULATIVE



DROPPED CLUBS: 5

273 CLUBS OF 394 ADDED 1 OR MORE NEW MEMBERS

GENDER DISTRIBUTION

DROPPED MEMBERS

DECEASED	6
CLUB CANCELLED	69
OTHER	481
TOTAL	556

MALE	6,706 (67.43%)
FEMALE	3,239 (32.57%)
NON BINARY	0 (0.00%)
PREFER NOT TO ANSWER	0 (0.00%)

[CLICK HERE FOR CUMULATIVE MEMBERSHIP DATA](#)

TOTAL FAMILY UNIT MEMBERS	7,768
FAMILY MEMBERS PAYING HALF DUES	5,675